

# Repelsteeltje

een sprookje voor kinderen  
van alle leeftijden

op muziek van

Arie van Hoek

naar vertellingen van de gebroeders Grimm

# Contrabass

5 pizzicato

12 *mp* *poco rall.*

20 *arco* *ff* *p* **34** **3/4**

59 **Largo** ♩ = 50 **3**

Measures 59-62 of the musical score. Measure 59: Bass clef, key signature of one flat (B-flat), 3/4 time signature. The measure contains a whole note chord of B-flat and D. Measure 60: Bass clef, key signature of one flat. The measure contains a quarter rest, followed by a triplet of eighth notes (B-flat, D, B-flat), and a quarter rest. The triplet is marked with a forte (ff) dynamic. Measure 61: Bass clef, key signature of one flat. The measure contains a whole note chord of B-flat and D. Measure 62: Bass clef, key signature of one flat. The measure contains a quarter rest, followed by a quarter note (B-flat), and a triplet of eighth notes (B-flat, D, B-flat). The triplet is marked with a forte (ff) dynamic. The piece ends with a double bar line and a final key signature change to two flats (B-flat and E-flat), with a 12/8 time signature indicated below the staff.

69 **Allegro** ♩. = 108

*ff* *p*

2 @ 1

[illegible]

90 *Molto rubato a tempo*

*f* *mf*

101  $\text{♩} = 120$  *Moto Meccanica, allegro*  $\text{♩} = 120$   
*arco*  
*p*

122

decresc.

140 **♩ 4 Moto Meccanica, allegro** **♩ = 120** **@ 4**  
*p* *change to woodblock*

**5 Marcia Pomposo, maestoso** ♩ = 96

157 **2** woodblock *mp* 1 2 3 4 5 6 7 8

167 9 10 11 12 13 14 15 16 17 *mf*

176 18 19 20 21 22 23 24 25 26 27 *rall. poco a poco* *accel.* *rit. a tempo* *mp*

186 28 29 30 31 32 33 34 *Tempo rubato* **4** *a tempo* @ 5 *change to double bass*

**6 Moto Mechanica, allegro** ♩ = 120

199 *arco* *p* @ 6

**7 Tempo Breve** @ 7 **8 Marcia Pomposo, maestoso** ♩ = 96

216 *change to woodblock* *mp* 1 2 3 4 5 6

229 7 8 9 10 11 12 13 14 15 16 *mf*

239 17 18 19 20 21 22 23 24 25 26 27 *rall. poco a poco* *accel.* *rit. a tempo* *mp*

250 28 29 30 31 32 33 34 *Tempo rubato* @ 8 *change to double bass*

**9 Valse Triste, andante** ♩ = 92

263 *pizzicato* *mp* @ 9

**10 Valse Triste, andante** ♩ = 92

281 *mp* *p* *pp* 1 2 3 4 5 6 7 **2** *ff*

302 @ 10 **11 Entrada Pontifical, allegretto** ♩ = 62  
 pizzicato *mf* poco rit.

309 *a tempo* @ 11

317 **12 Entrada Pontifical, allegretto** ♩ = 62  
*mf* poco rit.

323 *a tempo* @ 12

330 **13 Moto Meccanica, allegro** ♩ = 120  
*arco p* @ 13 6

359 pizzicato **14 Valse Triste, andante** ♩ = 92  
*mp* @ 14

377 **15 Moto Meccanica, allegro** ♩ = 120  
*arco p* @ 15 6

406 pizzicato **16 Valse Triste, andante** ♩ = 92  
*mp* @ 16

416 **17 Moto Meccanica, allegro** ♩ = 120  
*arco p* decresc.

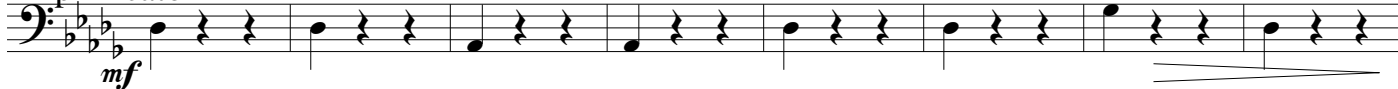
444 @ 17 **18 Valse Romantique, ♩ = 156**  
*f* *rall.* *mf* *a tempo* *mf*

457

472 *rall.*

486 **valse cantabile**,  $\text{♩} = 108$

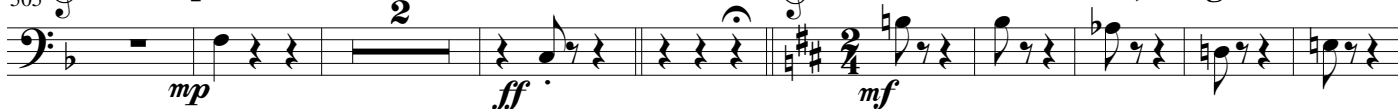
**pizzicato**



494



505 **19 Tempo Misterioso**,  $\text{♩} = 92$  **andante** **@ 19** **20 Entrada Pontifical**,  $\text{♩} = 62$  **allegretto**



516 **@ 20**



524 **21 Valse Triste**,  $\text{♩} = 92$  **andante** **@ 21**



534 **22 Entrada Pontifical**,  $\text{♩} = 62$  **allegretto** **@ 22**



548 **23 Entrada Pontifical**,  $\text{♩} = 62$  **allegretto** **@ 23**



555 **24 Canzone di nome**,  $\text{♩} = 108$  **allegretto**



576 **@ 24** **25 Diluvio Abuso**,  $\text{♩} = 92$  **allegretto**



586 **@ 25**



597 **26 Diluvio Abuso**,  $\text{♩} = 92$  **allegretto** **@ 26**



609 **27 Diluvio Abuso a Pondera, allegretto**  $\text{♩} = 92$  *poco accel.* **Andante**  $\text{♩} = 82$  pizzicato

616 pizzicato

630

**28 Grande Valse Romantique,**  $\text{♩} = 168$

643 arco *rall.* *a tempo*

655

667

677

687

697

707 *poco rall.* pizzicato

717 *Dolce*  
*a tempo*



729



742



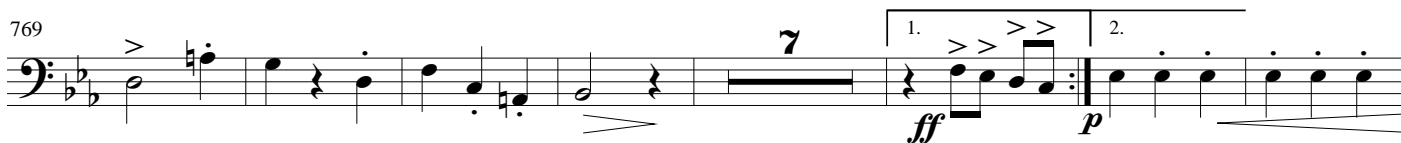
755



764 *arco* *poco meno mosso*



769



783 *rall.* *molto* *a tempo*



793



803



811



Notice of any performance will be very much appreciated.

© Arie van Hoek, Andelst, Holland, 2010