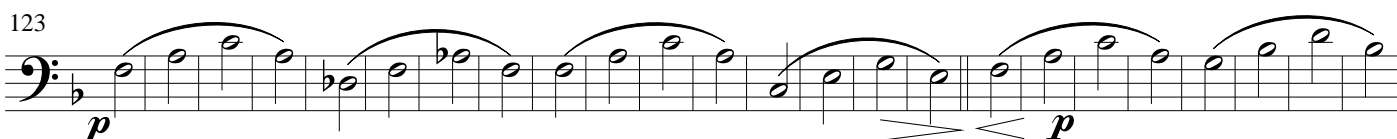
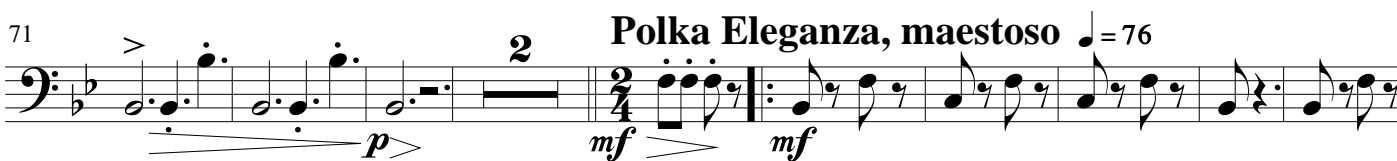


Repelsteeltje, suite uit de sprookjesmuziek

Contrabass

Arie van Hoek

Ouverture, adagio $\text{♩} = 52$

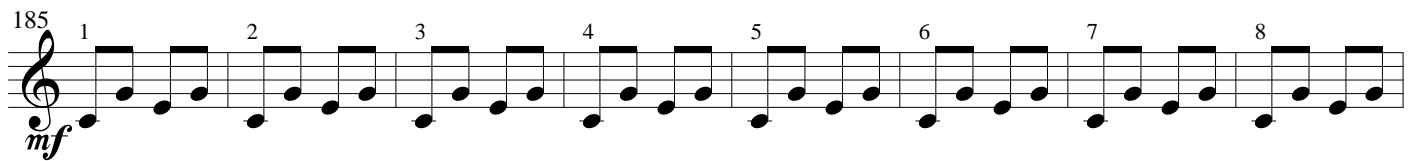


change to woodblock

171 **Marcia Pomposo, maestoso** ♩ = 96
4
mp



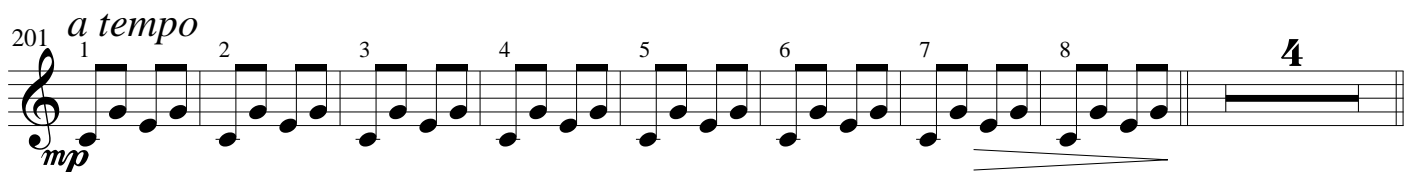
185
mf



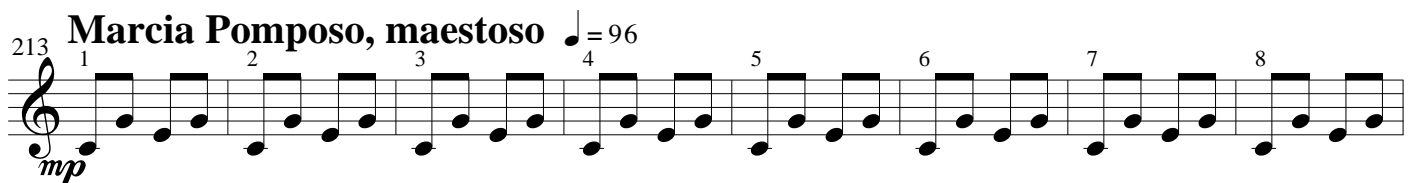
193 *rall. poco a poco* 1 2 3 4 5 6 7 8 *accel.* *rit.*



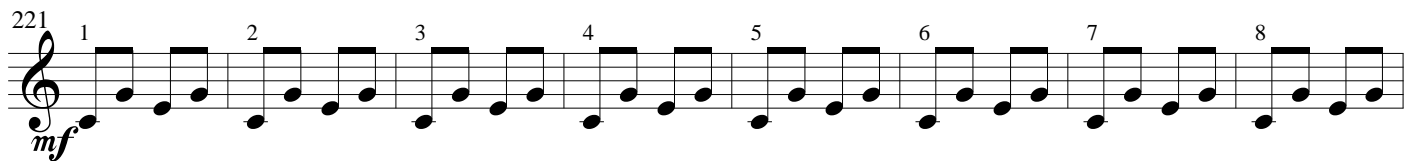
201 *a tempo* 1 2 3 4 5 6 7 8 4
mp




213 **Marcia Pomposo, maestoso** ♩ = 96
mp



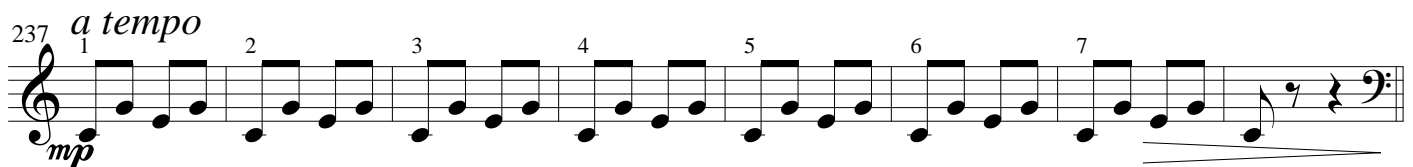
221 1 2 3 4 5 6 7 8
mf



229 *rall. poco a poco* 1 2 3 4 5 6 7 8 *accel.* *rit.*



237 *a tempo* 1 2 3 4 5 6 7
mp



change to Double Bass **Valse Triste, andante** ♩ = 92

245 2 pizzicato
ff



260
mp p



273 2
pp ff



286 **Entrada Pontifical, allegretto** *poco rit. a tempo*
 mf

298 *poco rit. a tempo*
 mf

Moto Mechanica, allegro ♩ = 120
 310 *arco*
 p

334 **Valse Romantique, ♩ = 156** *rall. > >*
 decresc. f mf

350 *a tempo*
 mf

364

378 **pizzicato valse cantabile, ♩ = 108**
 rall. mf mp

391 *poco rit.*

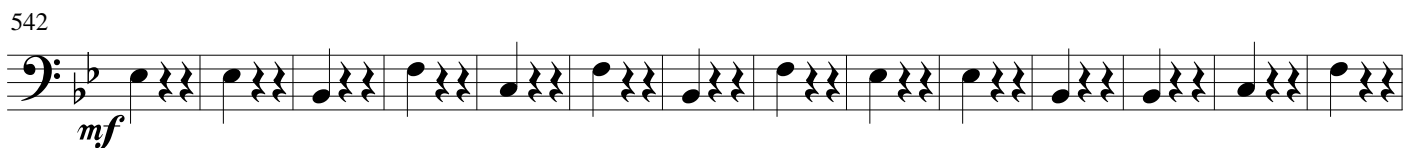
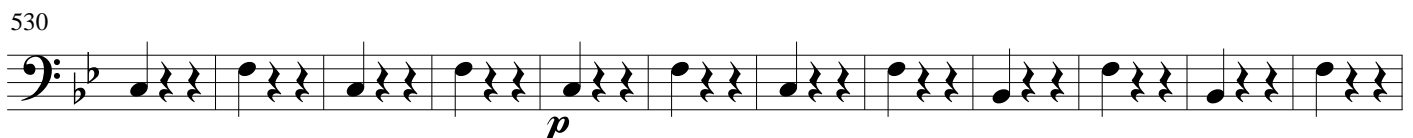
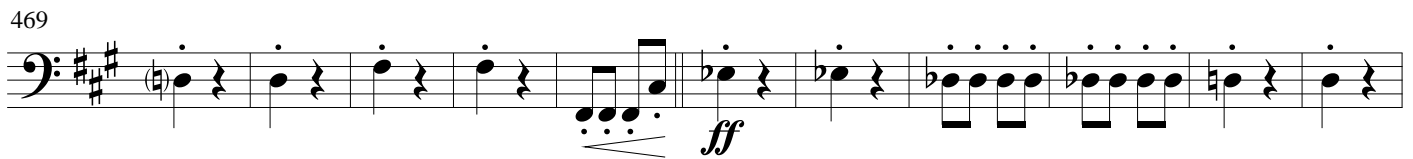
400 **Tempo Misterioso** 2 **Entrada Pontifical, allegretto** *poco rit.*
 mp ff mf

411 *a tempo* *rall.*

420 **Valse Triste, andante** ♩ = 92
 mp

432 **Canzone di nome, allegretto** ♩ = 108 15
 f mf

457 *arco* **Diluvio Abuso, allegretto** ♩ = 92



592 pizzicato
a tempo



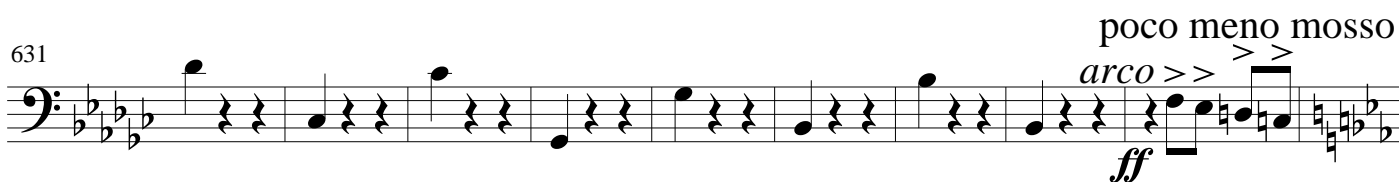
605



620



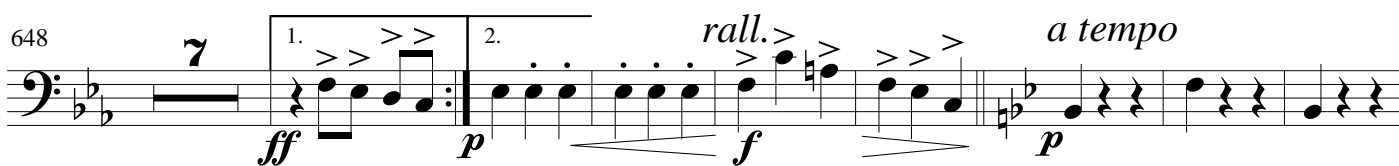
631



640



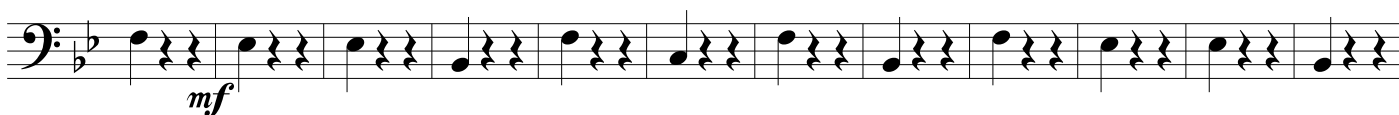
648



663



675



687

