

Serenade voor blazers

Arie van Hoek

Serenade voor blazers

Schetsen uit de Betuwe

Arie van Hoek

	tempo	tijdsduur
1. Allegro maestoso <i>Op pad</i>	(112)	5 min.
2. Largo <i>Verloren</i>	(60)	9 min.
3. Scherzo <i>Over de poes en de paarden</i>	(52-130-52-64-50)	5 min. 45
4. Andante <i>Een lome zomeravond op de schommel achter het huis</i>	(45)	5 min.
5. Largo-Allegro-Andante <i>Parade van de jonge eendjes</i>	(54-120-72)	5 min.
6. Scherzando <i>Dans van de mezen</i>	(56)	4 min.
7. Molto Allegro <i>Mars van de dorpsharmonie</i>	(124)	4 min.

Deel 1: Allegro maestoso

French Horn 1

f *mp* cresc. poco a poco

6

10 *ff* *f* *mp*

15 cresc. poco a poco

19 *ff* *p* *mf* *mf* 2

29 *p*

37 *p* *f* *mp* cresc. poco a poco

45 *ff*

50 *p* *ff*

56 legato dolce *p*



Deel 2: Largo

French Horn 1

Measures 1-6: The first staff shows measures 1 through 6. It begins with a whole rest, followed by a series of eighth notes, then a half note with an accent and a dynamic marking of *pp*. This is followed by a half note with an accent and a dynamic marking of *f*, then a half note with an accent and a dynamic marking of *f*, and finally a half note with an accent and a dynamic marking of *f*. The second staff shows measures 7 through 15. It begins with a whole rest, followed by a half note with an accent and a dynamic marking of *f*, then a half note with an accent and a dynamic marking of *f*, and finally a half note with an accent and a dynamic marking of *f*. The staff ends with a double bar line and a repeat sign.

un poco animato
con sordino

Measures 29-33: The staff shows measures 29 through 33. It begins with a half note with an accent and a dynamic marking of *p*, followed by a half note with an accent and a dynamic marking of *p*, then a half note with an accent and a dynamic marking of *p*, and finally a half note with an accent and a dynamic marking of *p*. The staff ends with a double bar line.

Measures 34-38: The staff shows measures 34 through 38. It begins with a half note with an accent and a dynamic marking of *p*, followed by a half note with an accent and a dynamic marking of *p*, then a half note with an accent and a dynamic marking of *p*, and finally a half note with an accent and a dynamic marking of *p*. The staff ends with a double bar line.

Measures 39-43: The staff shows measures 39 through 43. It begins with a half note with an accent and a dynamic marking of *p*, followed by a half note with an accent and a dynamic marking of *p*, then a half note with an accent and a dynamic marking of *p*, and finally a half note with an accent and a dynamic marking of *p*. The staff ends with a double bar line.

Measures 44-48: The staff shows measures 44 through 48. It begins with a half note with an accent and a dynamic marking of *p*, followed by a half note with an accent and a dynamic marking of *p*, then a half note with an accent and a dynamic marking of *p*, and finally a half note with an accent and a dynamic marking of *p*. The staff ends with a double bar line.

Measures 49-53: The staff shows measures 49 through 53. It begins with a half note with an accent and a dynamic marking of *p*, followed by a half note with an accent and a dynamic marking of *p*, then a half note with an accent and a dynamic marking of *p*, and finally a half note with an accent and a dynamic marking of *p*. The staff ends with a double bar line.

Measures 54-58: The staff shows measures 54 through 58. It begins with a half note with an accent and a dynamic marking of *p*, followed by a half note with an accent and a dynamic marking of *p*, then a half note with an accent and a dynamic marking of *p*, and finally a half note with an accent and a dynamic marking of *p*. The staff ends with a double bar line.



Deel 3: Scherzo

French Horn 1

Adagio Presto subito

f pesante *f*

11 Adagio Allegretto scherzando

f rit. *f*

21 *p* 9 *mf*

36 *mf* 2 *p* 1 *ff*

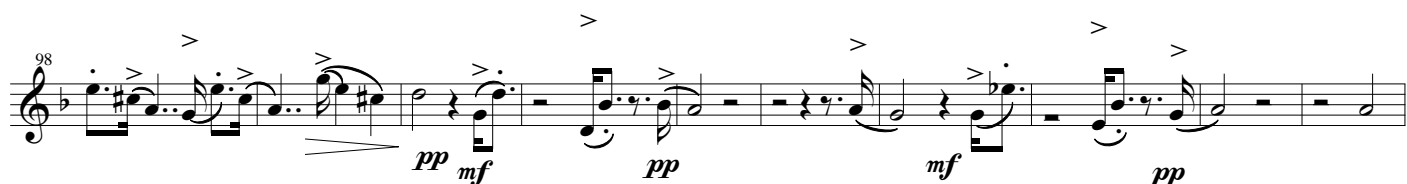
45 2 *p* *ff*

56

62 *mf*

67 *mf* 3 *p*

74 3 *f* 3 *f* *mf* *p* *mf* *mp*



Deel 4: Andante

French Horn 1

f *mf*

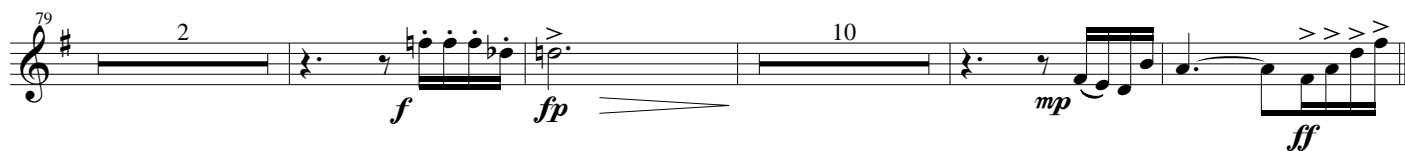
p *mf*

pp

f *pp*

ff *mf*

f *ff*



Deel 5: Largo-Allegro-Andante

French Horn 1

4

pp

7

16

pp

5

25

mf

mp

rit.

pp

Allegro

16

16

16

78

Allegro

p

86

94

16

f

118

Andante subito

ffp

p

mf

rit.

pp

130

2

ff

22

Deel 6: Scherzando

French Horn 1

The musical score for French Horn 1 consists of 167 measures across 11 staves. The key signature is one sharp (F#) and the time signature is 3/4. The score includes various dynamics such as *pp*, *p*, *mf*, *f*, *mp*, and *staccato*. It also features articulation marks like accents and slurs, and fingerings indicated by numbers 1 through 5. The notation includes eighth, quarter, and half notes, as well as rests and repeat signs.

Deel 7: Molto Allegro

French Horn 1

mf

9

17 *p* *mf* *p*

27 *mf* *p*

37 *mf* *p* *mf*

46

55 *mp* *f*

65

75 *mf* *ff* *Fine*

85 *pp*

95

104

113 *f*

121 *rit.*

D.S. forte e Maestoso al Fine